

Welcome to Year 1

Meet the Teaching Staff
2023

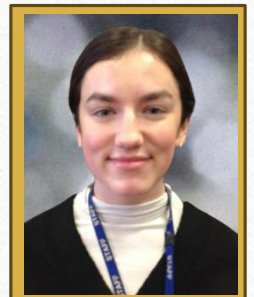
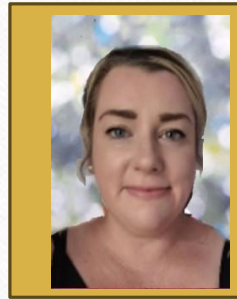


Meet the Teaching Staff:

Teachers- Miss Wright and Mrs Holdsworth

Teaching Assistants- Miss Worsey, Mrs Marriott, Miss Fox and Mrs Watson

1:1 Support- Miss Beeston





Wider Team

- **Senior Leaders:** Mrs Jilavu (Acting Headteacher), Mr Morris (Acting Deputy), Miss Wright (Acting Deputy), Mrs Walton (SENDco)
- **Safeguarding Leads:** Mrs Jilavu, Mr Morris, Mrs Stone, Miss Wright, Mrs Walton
- **SENDCo:** Mrs Walton
- **Family Support/Pastoral Lead :** Mrs Stone





Arrival and Finish:

Both Gates open 8:40- 8:50 daily



Year Group	Start	Finish
EYFS	8:50	3:20
Y1	8:50	3:20
Y2	8:50	3:20
Y3	8:50	3:25
Y4	8:50	3:25
Y5	8:50	3:25
Y6	8:50	3:25



Belongings needed:

- No pencil cases- all equipment is supplied
- Backpack with reading books
- No Rucksacks- optional for Y5 and 6
Children may bring a rucksack with a change of clothes if they are Swimming or at an afterschool club
- Label everything!
- Water bottle
- Lunchbox (unless dinners)
- No toys/additional items from home
- Morning Snack





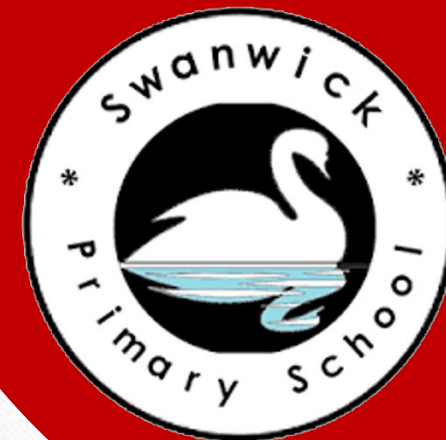
Lunch and Snacks:

- KS1 Universal Free School Meals
- Sandwiches or Hot Dinners
- Morning Snacks- Bring from home, Fruit, vegetables, fruit winders (avoid yoghurts and nuts)
- [Lunch Menu on the Website](#)



**PLEASE REMEMBER
WE ARE A NUT
FREE SCHOOL**

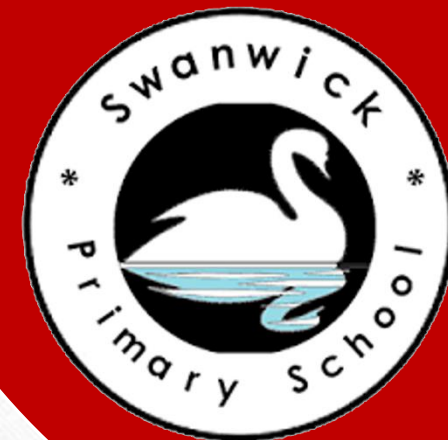




Our Timetable:

Y1 Class Timetable	8:50 – 9:00	9:00- 10:00	10:00 – 10:20	10:20 – 10:35	10:35 – 11:35	11:35 – 12:00	12:00 – 1:00	1:00 – 1:20	1:20 – 2:10	2:10 – 3:10	3:10 – 3:20
Monday	Register / Morning Work	9:00 – 9:20 Whole School Assembly (Intervention/ Readers)	9:20 – 10:20 RWI Phonics	KS1 Break Time	Maths	Writing	KS 1 Lun ch Ti me	Mastering Number	Enquiry	Music	Class Story
Tuesday	Register / Morning Work	RWI Phonics	Handwriting / Active Hands		Maths	Writing		Mastering Number	PE / PHSE		Class Story
Wednesday	Register / Morning Work	RWI Phonics	KS1 Assembly (Intervention/ Readers)		Maths	Writing		Mastering Number	PE / Enquiry		Class Story
Thursday	Register / Morning Work	RWI Phonics	KS1 Singing Assembly (Intervention/ Readers)		Maths	Writing		Mastering Number	Science	RE	Class Story
Friday	Register / Morning Work	RWI Phonics	Handwriting / Active Hands		Maths	Writing		Mastering Number	Computing /Provision	Spellin g Quiz	Whole School Celebration Assembly 2:40-3:10

Our Curriculum:



	Term 1: Home and Away	Term 2: Fire Fire!	Term 3: Poles Apart	Term 4: To Infinity and Beyond!	Term 5: Live, Thrive, Evolve!	Term 6: Flower Power
Focus	Geography and Science	History and Geography	Geography and Science	Geography and Science	Science and History	Science
English – Key Texts	The Colour Monster Building a Home The Koala Who Could	The Gingerbread Man Vlad and the Fire of London The Longest Journey Advert	Lost and Found Snow Poetry Penguins	Here We Are Man on the Moon advert Man on the Moon Toys in Space	Senses Poetry Lighthouse Keeper's Lunch My Body	My Bean Diary How to Plant a Seed The Enormous Turnip
						
English – Genres	Non-fiction captions and labels Emotions and feelings Labels and Diagrams Sequence instructions How to build a house	Traditional Stories Report Retelling Narrative	Poetry Information	Lists Letters Descriptions Posters and leaflets	Information Text Poetry Narrative	Narrative Instructions

Our Curriculum:



	Term 1: Home and Away	Term 2: Fire Fire!	Term 3: Poles Apart	Term 4: To Infinity and Beyond!	Term 5: Live, Thrive, Evolve!	Term 6: Flower Power
Maths	Place value to 10 Addition and Subtraction to 10 Shape Place Value to 20		Consolidation Addition and Subtraction to 20 Length and Height Weight and Volume Consolidations		Consolidation Multiplication and Division Fractions Position and Direction Place Value to 100 Money Time	
Science	Animals in hot countries Seasonal changes in UK Sorting Materials Experiment- Dissolving the Gingerbread Man!	4 Seasons STEM project- Building a bridge	Animals in cold countries- Classify, Identify STEM- Boat Making- Floating Sinking Observe Seasonal Change	Identify and Name Materials Gravity and forces Rockets	Human Body Staying Healthy 5 Senses	Plant Life Cycle Growth Seasonal Change
History	N/A	Fire of London Guy Fawkes Bonfire Night	N/A	Neil Armstrong Events and Sequence Historical Enquiry- Answer Questions	Local History Florence Nightingale Childhood and Memories	N/A
Geography	Local Knowledge Location of Swanwick Location of Australia 5 Continents	Location of London London landmarks	Location of Arctic and Antarctica 7 oceans Features- Hot and Cold Climates	Galaxy Earth	N/A	N/A
Religious Education	Who is a Christianity? What do they believe?	How and Why we Celebrate- Christmas	What can we learn from Sacred Books	How and Why we Celebrate- Easter	Who is Jewish?	Why should we care for the world?
Computing	Online Safety Logging in	Coding and Mapping	Paint and Digital Drawings	Games Software	Photos and Digital Changes	Easy View to investigate plants and nature Photographs of nature

Parent's following alternative religions can opt their children out of RE

Long Term Planner

Our Curriculum:



Great Fire of London: September 1666 - Children's song with words by AI Start



Five Oceans Song



Seven Continents Song



Uniform Requirements 2023-2024

Order Book Packs
from school



Water only :)

Can be ordered from Price and Buckland

Price & Buckland
SCHOOLWEAR SINCE 1989



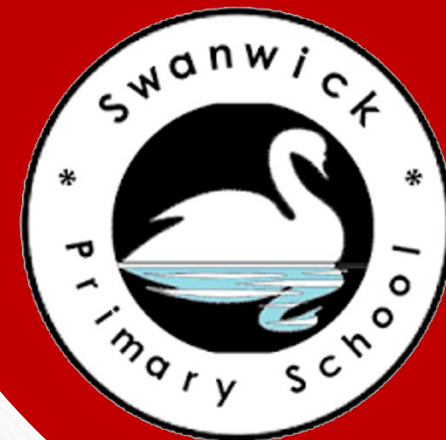
- Trousers or shorts- plain grey or black
- Skirt or pinafore- plain grey or black
- Sweatshirt or cardigan- burgundy (logo optional)
- Polo shirt or shirt- white or burgundy (logo optional)
- Dresses- in warmer weather. Checked or striped red
- Socks or tights- black, white or grey
- Footwear- sensible black shoes or boots

Accessories/Additional Items

Make up, nail- varnish and false nails should not be worn in school.

Children should not wear fake tan or adhesive tattoos.

Hair ties must be sensible and kept to a minimum.



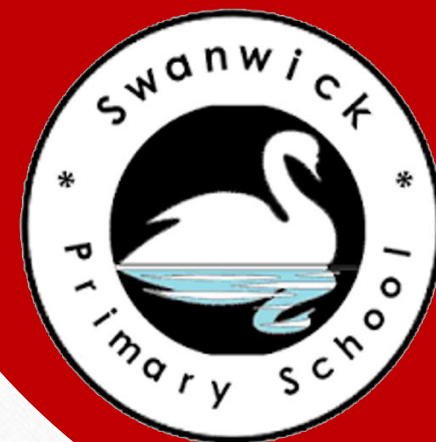


PE Kit Requirements 2023-2024



- Shorts or jogging bottoms- plain grey, black or navy
- T-shirt- plain white or black (logo optional)
- Hoodie/fleece- plain black or grey
- Sensible trainers- black or white
- Children wearing earrings will be asked to cover these up with tape
- All jewellery (exception of stud earrings) must be removed before PE and Swimming

Reading:

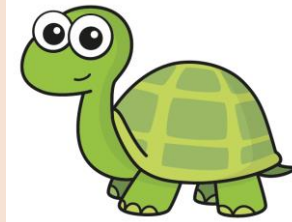


- Children will read in school daily as part of their hourly phonics session.
- They will read decodable books from the Read Write Inc scheme and then these will be sent home to allow children to practise reading with fluency.
- All children will have a phonics packet to take home, containing a reading book, speed sounds book and diary. It would be highly beneficially to read daily with your child and record this in their diary.
- At certain points in the year additional words will be sent home or put on Tapestry to help children to practise their decoding skills.
- Class library- Children will bring home an additional library book to share with a grown-up.

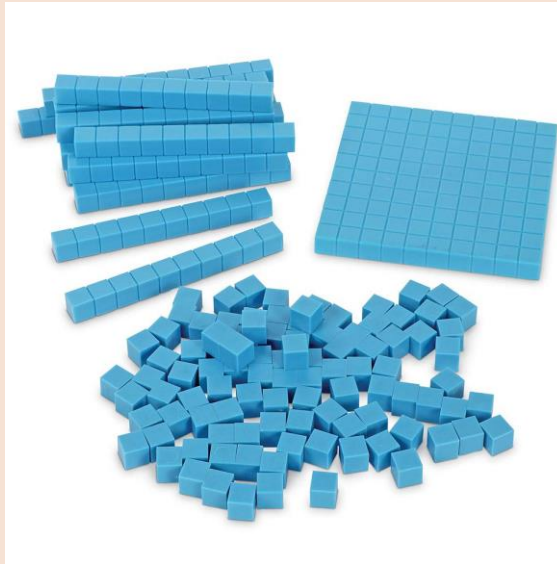


KS1

White Rose
MATHS



Mastering Number



Key Stage 1 and 2 symbols

The following symbols are used to indicate



concrete resources might be useful to help answer the question



a bar model might be useful to help answer the question



drawing a picture might help children to answer the question



children talk about and compare their answers and reasoning



a question that should really make children think. The question may be structured differently or require a different approach from others and/or tease out common misconceptions.





Partnership- working together

- Home school agreement- shared on our school website
- Attendance Policy- shared on our school website





Planned Visits and Events:

- Keep an eye on the Swanwick Story and Tapestry
- Key dates- sent out at start of the year and updated termly
- Rough terms for trips - every class will have at least one visit off site- our **Year 1 trip is usually in the Summer Term**
- Additional experiences planned on site-

EYFS, Y1+Y2 Christmas Play, Fire Engine Visit, Themed Days, Bedtime Reading and Breakfast Reading, Science Week, Orienteering Day (Y1)

Homework:



- Homework Policy – To be shared by the end of this term with parents
- Reading focus-books sent home, library books or own books





Assessments:

Statutory Test

- Year 1 Phonics Screening Week – WC 10th June 2024

Classroom Assessment

- Phonics Termly Assessments- used to regroup children and establish areas of focus (updates via Tapestry)
- Maths end of block assessments
- Writing Moderations



School Rules

Rewards and Consequences:





Holiday Preparation

- Talk positively about the move to year 1 and play down your own anxieties if you have them.
- Talk to your little one about what is coming up in September- revisit this slide show. Look at the map and the pick up points.
- Discover the magic loop (to peg clothes up)
- Read, read, read.
- Talk about the things you need to take to school and bring home each day – for example, your jumper, coat, book bag and water bottle.
- Talk about how you are feeling and know how to calm yourself down if you are feeling cross.
- Practice putting on and fastening your shoes and coat
- Relax and have some fun!

Thankyou!

Thank you for attending this meeting. I am really looking forward to working with you and your children over the coming school year!

If you want to discuss anything further, please do not hesitate to contact me.
My email address is

Elm Teacher: Jenny.wright@swanwick.derbyshire.sch.uk

Ash Teacher: Michaela.Holdsworth@swanwick.derbyshire.sch.uk

Concerns around SEN/additional needs-
melynda.walton@swanwick.derbyshire.sch.uk

General enquiries: info@swanwick.derbyshire.sch.uk

Pastoral: ppod@swanwick.derbyshire.sch.uk

